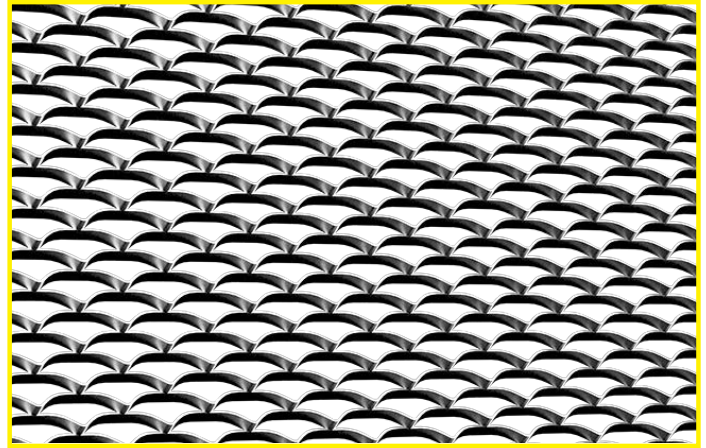




MESHTEC Idea

Meshtec® expanded metal is one of the most versatile products in the Cadisch MDA range, offering durable transparency with high airflow and easy installation. With a wide range of materials and finishes and ongoing R&D, we continue to extend the range of expanded metal mesh products with an ever increasing spectrum of new and innovative wide band products for metal cladding, and lighter meshes for screening and ceilings.

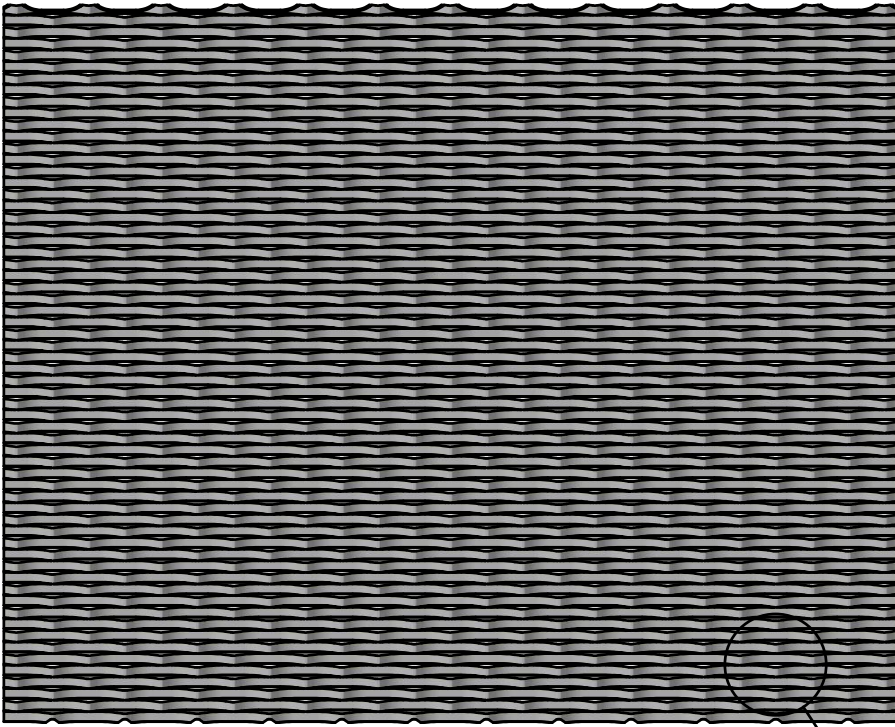


PROPERTIES:

Type:	Meshtec Idea
Mesh:	76mm (LWM) x 31mm (SWM)
Strand:	11mm
Material:	Aluminium / Pre Galvanised Mild Steel
Material Thickness:	1.5mm / 2mm
Max Sizes:	1000x2000, 1250x2500, 1500x3000, 2000x1600 Max, 2500x1600 Max
Finishes:	Anodised (Aluminium), Powder coated, Specialist PPC
NBS:	H31 Metal Profiled / Flat Sheet Cladding / Covering
Visual Open Area:	13.30%
Weight (kg/m ² *):	Aluminium: 1.5mm: 3.6, 2mm: 4.7 Mild Steel: 1.5mm: 10.6, 2mm: 14.1

SUGGESTED APPLICATIONS:

DIMENSIONS:



LWM = Long Way Mesh (mm)
 SWM = Short Way Mesh (mm)
 SW = Strand K (mm)
 ST = Strand Thickness (mm)

