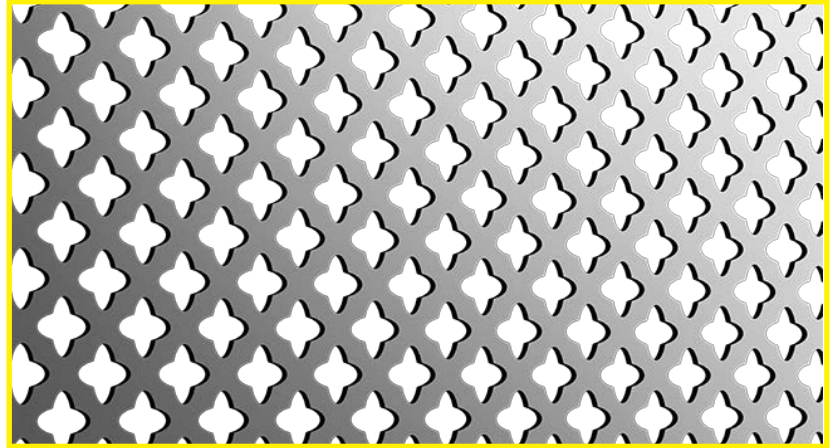




PERFTEC TREFOIL LEAF (L)



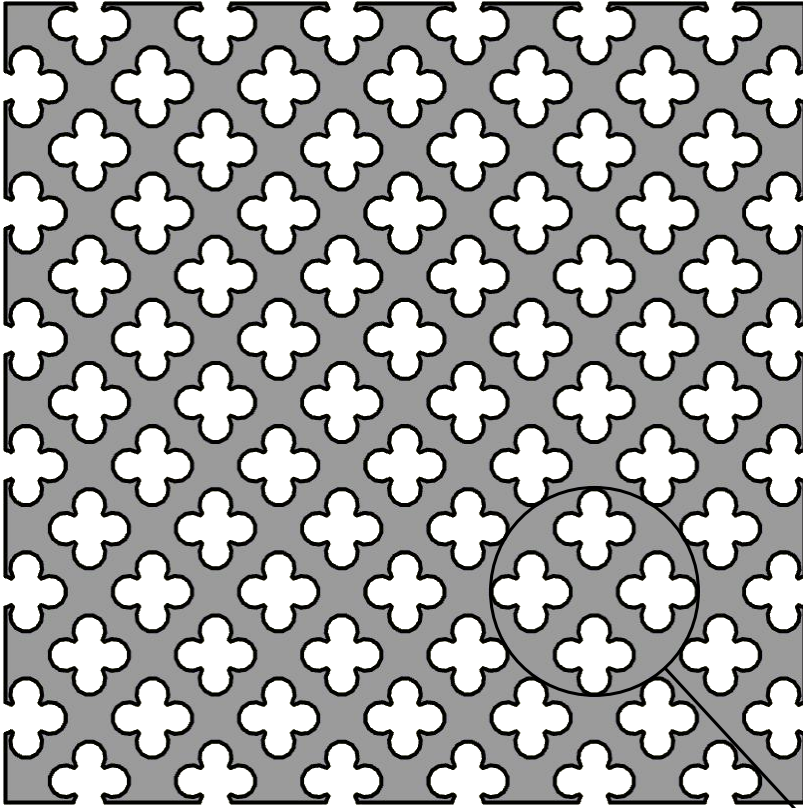
The Perftec range offers a wide array of holes and patterns punched into metal sheets. A large variety of metals and finishes enables designers and architects the chance to offer bespoke form and function combined with transparency, airflow and easy installation.

PROPERTIES:

Type:	Perftec Trefoil Leaf (L)
Holes:	Between 6mm - 10mm diameter
Material:	Aluminium, Stainless Steel, Mild Steel, Yellow Metals
Thickness:	0.8mm - 1.5mm
Open Area:	40%
Standard Panel Sizes:	1000mm x 2000mm
Finishes:	Mill, Anodised (Aluminium), Powder coated, Galvanised

SUGGESTED APPLICATIONS:

DIMENSIONS:



c = Hole Size (mm)
u = Pitch (mm)

