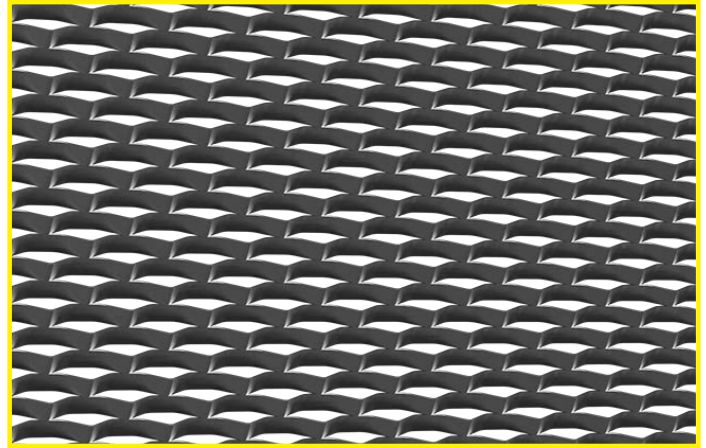




MESHTEC Reserve

Meshtec® expanded metal is one of the most versatile products in the Cadisch MDA range, offering durable transparency with high airflow and easy installation. With a wide range of materials and finishes and ongoing R&D, we continue to extend the range of expanded metal mesh products with an ever increasing spectrum of new and innovative wide band products for metal cladding, and lighter meshes for screening and ceilings.

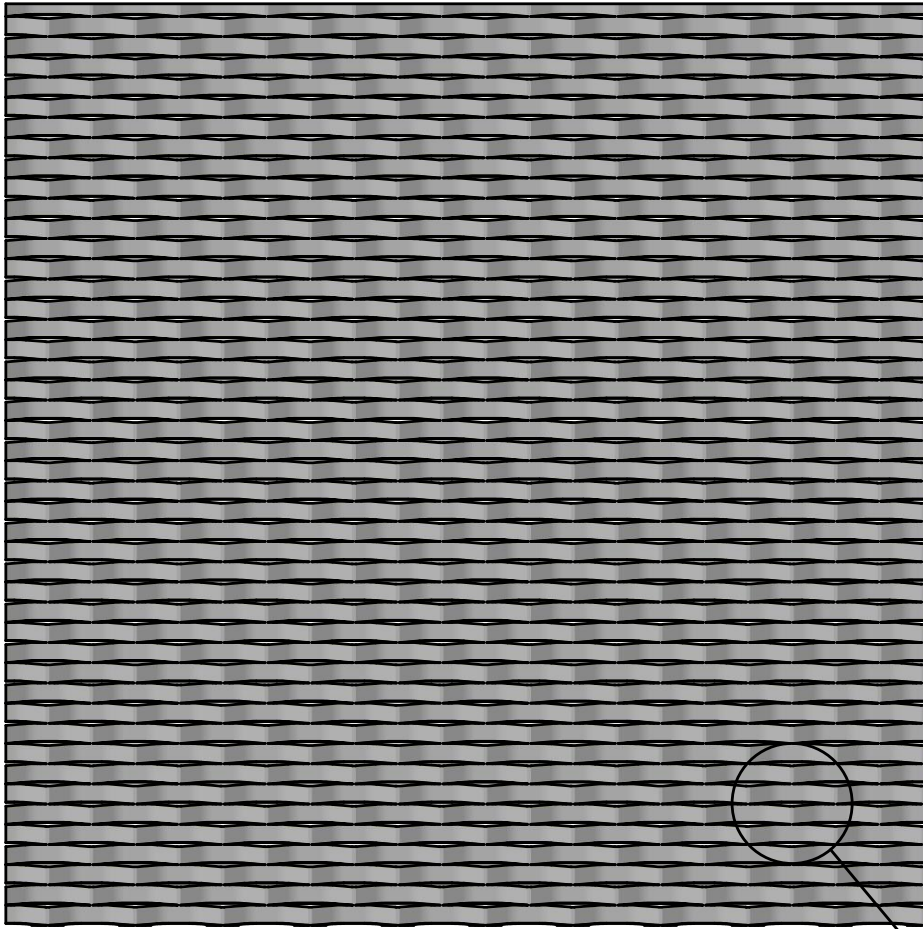


PROPERTIES:

| | |
|-------------------------------|--|
| Type: | Meshtec Reserve |
| Mesh: | 90mm (LWM) x 30mm (SWM) |
| Strand: | 18mm |
| Material: | Aluminium / Pre Galvanised Mild Steel |
| Material Thickness: | 1.5mm / 2mm |
| Max Sizes: | 1000x2000, 1250x2500, 1500x3000, 2000x1600 Max, 2500x1600 Max |
| Finishes: | Anodised (Aluminium), Powder coated, Specialist PPC |
| NBS: | N/A |
| Visual Open Area: | 10% |
| Weight (kg/m ² *): | Aluminium: 1.5mm: 7.8, 2mm: 10.2 Mild Steel: 1.5mm: 2.6, 2mm: 3.4 |

SUGGESTED APPLICATIONS:

DIMENSIONS:



LWM = Long Way Mesh (mm)
 SWM = Short Way Mesh (mm)
 SW = Strand Width (mm)
 GH = Grid Height (mm)

